

To: Members of the Standing Advisory  
Council for Religious Education  
(SACRE)

Date: 9 October 2024

Direct Dial: 01824 712568

e-mail: [democratic@denbighshire.gov.uk](mailto:democratic@denbighshire.gov.uk)

Dear Sir / Madam

You are invited to attend a meeting of the **STANDING ADVISORY COUNCIL FOR RELIGIOUS EDUCATION (SACRE)** to be held at **10.00 am** on **TUESDAY, 15 OCTOBER 2024 BY VIDEO CONFERENCE**.

Yours sincerely

Gary Williams  
Monitoring Officer

## **AGENDA**

### **SILENT REFLECTION**

#### **1 APOLOGIES**

#### **2 DECLARATION OF INTERESTS**

Members to declare any personal or prejudicial interests in any business identified to be considered at this meeting.

#### **3 URGENT MATTERS AS AGREED BY THE CHAIR**

Notice of items which, in the opinion of the Chair, should be considered at the meeting as a matter of urgency pursuant to Section 100B(4) of the Local Government Act 1972.

#### **4 MINUTES OF LAST MEETING (Pages 7 - 12)**

To receive and approve the minutes of the Denbighshire SACRE meeting held on 26 June 2024 (copy enclosed).

**5 DENBIGHSHIRE SUMMER 2024 NEWSLETTER** (Pages 13 - 16)

To receive the Denbighshire and Conwy Summer 2024 Newsletter (copy enclosed).

**6 RELIGION, VALUE AND ETHICS (RVE), A SECONDARY PERSPECTIVE - SARAH GRIFFITHS (HEAD OF RVE, YSGOL DINAS BRAN)** (Pages 17 - 18)

To receive a presentation on how RE and RVE is being delivered in Ysgol Dinas Bran.

**7 ESTYN INSPECTION UPDATE** (Pages 19 - 20)

Estyn inspection guidance for schools inspected from Sept 2024 – 2030 was published during the summer. Documents explaining what and how Estyn inspect can be accessed on the Estyn Website

How we inspect

Welsh –

[Sut rydym yn arolygu Ysgolion a gynhelir ac UC Dau 0.pdf \(gov.wales\)](#)

English - [How We Inspect - 2024 maintained schools and PRUs \(gov.wales\)](#)

What we inspect

Welsh - [Beth rydym yn ei arolygu - Ysgolion a gynhelir ac UC Dau \(gov.wales\)](#)

English - [What We Inspect - 2024 Maintained Schools and PRUs \(gov.wales\)](#)

**8 SACRE DRAFT ANNUAL REPORT 2023 - 24** (Pages 21 - 40)

To consider and approve the draft SACRE Annual Report 2023 – 24 (copy enclosed).

**9 WASACRE** (Pages 41 - 42)

- To receive a verbal update about the WASACRE conference held on 13 June 2024
- To agree attendance to the next WASACRE meeting on 14 November 2024

**10 DATE OF NEXT MEETINGS**

- Spring 2025 – 10am 14 February 2025
- Summer 2025 – 10am 4 June 2025
- Autumn 2025 – 10am 2 October 2025

## **MEMBERSHIP**

### **Councillors Representing Denbighshire County Council**

Ellie Chard  
Ann Davies  
James May  
Merfyn Parry

Huw Williams  
Delyth Jones  
Emrys Wynne

### **Representing Religious Denominations and Non-Religious Philosophical Convictions**

Suzy Sturley  
Mr. Dominic Oakes  
Rev. B H Jones

Rev. Martin Evans-Jones  
Jennie Downes  
Collette Owen

### **Representing Teacher Associations**

Susan Williams  
Leah Crimes

Sarah Griffiths

### **Co-opted Members**

Ms. Tania Ap Siôn

### **COPIES TO:**

All Councillors for information  
Press and Libraries  
Town and Community Councils

This page is intentionally left blank

## LOCAL GOVERNMENT ACT 2000

---

### Code of Conduct for Members

### DISCLOSURE AND REGISTRATION OF INTERESTS

I, *(name)*

a \*member/co-opted member of  
*(\*please delete as appropriate)*

**Denbighshire County Council**

**CONFIRM** that I have declared a **\*personal / personal and prejudicial** interest not previously declared in accordance with the provisions of Part III of the Council's Code of Conduct for Members, in respect of the following:-

*(\*please delete as appropriate)*

Date of Disclosure:

Committee *(please specify)*:

Agenda Item No.

Subject Matter:

Nature of Interest:

*(See the note below)\**

Signed

Date

\*Note: Please provide sufficient detail e.g. 'I am the owner of land adjacent to the application for planning permission made by Mr Jones', or 'My husband / wife is an employee of the company which has made an application for financial assistance'.

This page is intentionally left blank

## **STANDING ADVISORY COUNCIL FOR RELIGIOUS EDUCATION**

Minutes of the Standing Advisory Council for Religious Education meeting held by video conference on Wednesday 26 June 2024 at 10am.

### **PRESENT**

**Representing Denbighshire County Council** - Councillors Ellie Chard, Ann Davies, and Emrys Wynne.

**Representing Religious Denominations** - Collette Owen

**Representing Teacher Associations** – Sarah Griffiths

### **ALSO PRESENT**

RE Advisor (PL), Principal Education Manager (JB), Welsh National Centre for Religious Education Officer (Dr JA) and Committee Administrators (NH and RTJ [Zoom Host])

### **SILENT REFLECTION**

The meeting began with a few minutes' silent reflection.

#### **1. APOLOGIES**

Apologies for absence were received from Jennie Downes, Leah Crimes, Susan Williams, Jennifer Harding-Richards and Councillors Gill German and Delyth Jones.

#### **2. DECLARATIONS OF INTERESTS**

Councillor Ellie Chard declared a Personal Interest in agenda item 7 as she was a governor at Ysgol Tir Morfa.

Councillor Emrys Wynne declared a Personal Interest in agenda item 7 as he was a governor at Ysgol Bryhyffryd and Ysgol Borthyn.

#### **3. URGENT MATTERS AS AGREED BY THE CHAIR**

No items of an urgent nature had been raised with the Chair prior to the commencement of the meeting.

#### **4. MINUTES OF THE LAST MEETING**

The minutes of the Standing Advisory Council for Religious Education meeting held on the 22 February 2024 were submitted. It was:

**RESOLVED:** *that the minutes of the meeting held on the 22 February 2024 be received and approved as a true and correct record of the proceedings.*

## 5. WELSH NATIONAL CENTRE FOR RELIGIOUS EDUCATION

Dr Joshua Andrews from Bangor University guided Members through a presentation on the Welsh National Centre for Religious Education.

The Centre was relaunched in 2022 with the mission to offer free academic expertise and pedagogical support for the teaching of religious education. The centre focused on Philosophy, Religion and Ethics with a target audience of Teachers and students from Primary School and PGCE level courses.

The centre offered key activities including –

- Workshops
- Revision sessions
- CPD (continuing Professional Development) events.

Members were given information on the accomplishments of the centre within the last 12 months which included –

- **Artifact Boxes:** 10 religion- specific artifact boxes for teaching major world religions were created and were available for loan to schools.
- **A-Level Revision Sessions:** An in-house A-Level revision session for students in Anglesey and Gwynedd was organised including sessions for students in Carmarthenshire at Sir Gar College.
- **CPD Training:** CPD training was provided for teachers on teaching Buddhism and Hinduism.
- **Online Sessions:** Online sessions were hosted from October 2023 to January 2024 for GCSE and A-Level students and teachers, exploring the relevance of Philosophy, Ethics, and Religion in contemporary society.
- **Summer School:** An online Summer School was conducted in July 2023 with 15 lectures being provided to introduce students to university level topics in Philosophy, Ethics and Religion.
- **Holocaust Pedagogy:** A panel was hosted on the Holocaust pedagogy and an online talk from a Holocaust survivor for secondary schools was held.

Members were informed of ongoing projects including revision sessions, the National Launch of revision guides, Peace Lessons and CPD events.

Information was given on the New Projects the centre had begun which included –



- GCSE Revision Videos: A series of short GCSE revision videos titled `A Topic in Ten` would cover different aspects of the WJEC GCSE syllabus.
- Philosophy Podcast: A podcast on A-Level Philosophy of Religious and Ethics was being developed, focusing on the WJEC A-Level syllabus and featured discussions with academics.
- Subject Knowledge Enhancement Courses: Online Courses aimed at PGCE students were being developed. These were also available to all teachers to enhance subject knowledge.

The Chair thanked Dr Andrews for his presentation and questions were welcomed from members.

Members sought clarity on children from different backgrounds being integrated with different religions when they first started High School. Dr Andrews explained that each school had a syllabus that was devised locally which would incorporate the religious beliefs within the community. Many schools had requested sessions from the Welsh National Centre for Religious Education on specific topics.

Members discussed the Summer School that was held and questioned whether different sessions could be held over numerous weeks in the Summer Holidays. Dr Andrews explained that the Summer School was completely free to attend, sessions were held online to enable a greater attendance. Additional sessions could be a possibility, and this would be taken to the Board for further discussion and consideration.

Members expressed their appreciation to Dr Andrews for the valuable resources the centre offered, particularly the artifact boxes and questioned if there was a website in which schools could request to loan them from. Dr Andrews stated that there was a website and that the artifact boxes were loaned to schools using rota system.

Members questioned if the use of the resources offered from the centre could also be offered to colleagues in Primary Schools. Dr Andrews welcomed the idea and would take the idea to the next Board meeting for consideration.

Dr Andrews thanked members for their comments and feedback.

The Chair thanked Dr Andrews for his presentation and for attending the meeting and welcomed working in partnership in the future.

**RESOLVED:** *that the presentation on the Welsh National Centre For Religious Education be received and noted.*

## 6. RE HUBS

Unfortunately, Jennifer Harding gave her apologies for the meeting. An agenda item on RE Hubs would be brought to the Standing Advisory Council for Religious Education in Autumn 2024.

**RESOLVED:** *that the agenda, item RE Hubs be deferred to the Standing Advisory Council for Religious Education meeting in Autumn 2024.*

## 7. ANALYSIS OF INSPECTION REPORTS

The RE Advisor gave a brief overview of the Analysis of Inspection Reports for Denbighshire SACRE.

The analysis was for inspection reports published between 7 June 2023 and 1 May 2024.

With Members reading the reports prior to the meeting the RE Advisor asked for any questions or comments relating to them.

Members commented that the inspection reports were very positive, and it was pleasing to read encouraging comments on Well-Being and Attitudes to Learning and Care, Support and Guidance.

**RESOLVED:** *that the Analysis of Inspection Reports be received and noted.*

## 8. WASACRE

The representative for Religious Denominations was unable to attend the meeting. Councillor Ellie Chard gave a brief update on their behalf.

The Conference Day held at Wrexham University on June 13 2024 provided a great networking opportunity for all those involved in RVE. An inspirational address was given by Professor Graham Donaldson, who spoke about the scale of educational reform, this was necessary in response to new and growing expectations around the purpose of education. The discussion centred on the needs of a rapidly changing society and new conceptions of knowledge. Looking to a world where artificial intelligence dominates and a more fluid and global job market. Digital skills continue to progress rapidly and there was a real need for learners to be equipped with the integral skills of creativity and critical thinking needed to adapt and evolve new lifelong learning.

There was an address by the Cabinet Secretary for Education, Lynne Neagle and also from the Bishop of Llandaff, who held the CinW portfolio for Education both gave strong support to WASACRE.

The workshops and seminars were available before the conference day, on the day and would continue online into September, exploring planning of critical, objective pluralistic RVE from Early Years to primary & into secondary settings.

On Conference Day teachers from across Wales gave insight into the journey they had been making in RVE and there were many examples of creative pedagogy shared.

The WASACRE AGM was held at the end of the Conference Day. Thanks were given to the hard work of all involved in organising the conference, and the host LA Wrexham. The next WASACRE Executive meeting was scheduled for the 2 October 2024 with the new Chair Revd Edward J Evans.

**RESOLVED:** *that the WASACRE update be noted.*

## **9. DATE OF NEXT MEETING**

The next meeting of Denbighshire SACRE would be held on 15 October 2024.

Meeting concluded at 11.10am

This page is intentionally left blank

|  |          |  |
|--|----------|--|
| <b>Denbighshire County Council<br/>Standing Advisory Council for Religious Education<br/>(SACRE)</b> |          |  |
| Date of Meeting:   |          | 15th October 2024                      |
| Agenda Item:   | <b>5</b> | DENBIGHSHIRE SUMMER 2024<br>NEWSLETTER |
| <u>Background to the Report:</u>   |          |  |
| Denbighshire and Conwy Summer 2024 was published.  |          |  |
| <u>Purpose of the Report:</u>  |          |  |
| To inform members regarding the articles on the newsletter.  |          |  |
| <u>Recommendations:</u>  |          |  |
| <ul style="list-style-type: none"><li>▪ To receive the newsletter.</li></ul>                         |          |  |

This page is intentionally left blank



# REach

## Denbighshire and Conwy SAC/RE Newsletter

Issue 3: Summer 2024

**HELLO**

and welcome to REach, the newsletter supporting the work of Denbighshire and Conwy's SAC/REs. This is our third edition. The first edition explained the role of purpose of SACRE and need for a newsletter, you can access the first edition [here](#). The Welsh Association of SACREs published '[Handbook for SACRE members in Wales](#)' is a helpful guide providing details about the purpose and role of a local SAC/RE.

Our second edition provided key information about the new Locally Agreed Syllabus written to align with the introduction of a new Curriculum for Wales. [Click here](#) to access the 2nd edition. This edition also included information on the Agored Exploring Worldviews qualification, the St Giles Centre and a post 16 resource called Challenging Religious Issues.

For information about the RVE and the Curriculum for Wales 2022 please watch this 35 minute [training session](#) organised by Denbighshire Local Authority.

### Religion, Values and Ethics (RVE): what's new?

The Welsh Association of SACREs worked in partnership with Welsh Government to produce a suite of Professional Learning modules on RVE in the new curriculum. There are 5 modules:

- [Module 1: early years](#)
- [Module 2: primary](#)
- [Module 3: secondary](#)
- [Module 4: additional learning needs](#)
- [Module 5: headteachers](#)



All the modules are designed to develop an understanding of the changes to RVE in the Curriculum for Wales as they relate to the relevant settings. They will help teachers feel confident, inspired and motivated to approach these changes within their specific schools or settings.

The modules support teachers to interpret the RVE guidance in a purposeful and practical way and they will allow practioners to identify opportunities to translate the

RVE guidance in a suitable way for learners.

All the modules have been written by people working within the relevant settings. They contain clear information about:

- the changes in the curriculum;
- the key aspects of the new curriculum;
- a definition of 'non-religious philosophical convictions';
- case studies.



### Right to Withdraw

There is no right to withdraw a pupil from Religion, Values and Ethics, but parents with children receiving the current Religious Education (e.g. 10 and 11 in Sept 2024) will continue to have the right to withdraw their child from RE. This may result in parents withdrawing a year 10 learner but not withdrawing a child in year 7. Denbighshire SACRE have created guidance to support schools with changes regarding this legislation. [Click here](#) to access this guidance.

### National and Regional Training Resources

National and Regional Professional Learning is available for all aspects of the Curriculum for Wales 2022. To access national sessions focusing on progression in the Areas of Learning and Experience can be accessed by [clicking here](#).



To access the GwE training materials click below:



- 1) Considerations of the Mandatory elements, principles of planning and designing your curriculum. [Video Slides](#)
- 2) Developing a shared understanding of the learning continuum, planning and assessment and pedagogical approaches to humanities. [Video Slides](#)

Denbighshire and Conwy SAC/REs are members of the Welsh Associations of Standing Advisory Councils/ for Religious Education. The purpose of WASACRE is to provide a forum for the exchange of good practice and to represent the aims, work, and views of its member SACs / SACREs.

Established in 1995, WASACRE provides member SAC/REs with the following support:

- **Advocacy and Representation** —
- Putting the views of SACs forward
- Working for the interests of SACs
- Raising the profile of SACs
- **Advice and Support** —
- Listening to the needs of member SACs
- Offering trusted advice from experts in Wales
- Identifying and engaging with opportunities and challenges
- **Networks** —
- Enabling the sharing of experiences and practise
- Building bridges across Wales and beyond
- **Relationships and Partnerships** —
- Engaging with national and international organisations
- Facilitating national initiatives and projects
- **Empowering Voices** —
- Supporting SACs with consultation responses
- Keeping SACs updated on relevant developments
- Encouraging participations in national conversations
- **Trusted Resources** —
- Statutory RVE guidance
- National professional learning resources
- Advisory documents
- WASACRE conferences
- **On the Pulse** —
- Well-informed and experienced Officers
- A broad and dedicated Executive Committee
- Up to speed with latest developments

To access the current Agreed Syllabus and resources supporting RE and collective worship please join our North Wales Religious Education Hwb Network... <https://hwb.gov.wales/go/d8tfh3> and/or our the Conwy or Denbighshire Microsoft TEAMS. Please email [lordp2@hwbcymru.net](mailto:lordp2@hwbcymru.net) for more information.

The WASACRE conference 2024 included an in-person conference day held on 13th June and a series of online seminars. The conference day, held at Wrexham University, provided delegates with keynote talks from Graham Donaldson, Lynne Neagle MS (Cabinet Secretary for Education and the Bishop of Llandaff, Rt Revd Mary Stallard. Attendees were able to choose from a selection of workshops from teachers and RVE professionals celebrating good practise in the Curriculum for Wales.



All the keynote sessions were recorded and can be accessed from the WASACRE website.

Schools belonging to WASACRE member SAC/REs can access the following webinars for free. [Click here](#) for access details

#### Pre-conference online seminars

**Seminar 1 (23.04.24)** An introduction to SAC / SACRE: What do you need to know? Donna Graves and Hayley Jones

**Seminar 2 (30.04.24)** What does RVE look like in the early years setting? Sue Hughes and Libby Jones

**Seminar 3 (07.05.24)** Developing empathy through story in the nursery setting Phil Lord

**Seminar 4 (14.05.24)** Approaching RVE planning: Having regard to the RVE Guidance Libby Jones

Post-conference online seminars will be available soon.

**Future Newsletters** We would like to include articles showcasing good practice for RE and Collective Worship across North Wales. If you like to contribute to REach please contact [LordP2@hwbcymru.net](mailto:LordP2@hwbcymru.net)



|  |          |                   |
|--|----------|-------------------|
| <b>Denbighshire County Council</b><br><b>Standing Advisory Council for Religious Education</b><br><b>(SACRE)</b>   |          |                   |
| Date of Meeting:   |          | 15th October 2024 |
| Agenda Item:   | <b>6</b> | RVE PRESENTATION  |
| <u><i>Background to the Report:</i></u>  |          |                   |
| <p>Schools are developing their curriculum in line with the Curriculum for Wales 2022. To receive a presentation on the how RE and RVE is being delivered in Dinas Bran.</p> |          |                   |
| <u><i>Purpose of the Report:</i></u>   |          |                   |
| <p>To be informed about how RE and RVE is being planned and delivered in Ysgol Dinas Bran, Llangollen.</p>   |          |                   |
| <u><i>Recommendations:</i></u>   |          |                   |
| <ul style="list-style-type: none"><li>▪ To receive the presentation.</li></ul>   |          |                   |

This page is intentionally left blank

|   |          |                         |
|---|----------|-------------------------|
| <p><b>Denbighshire County Council</b><br/> <b>Standing Advisory Council for Religious Education</b><br/> <b>(SACRE)</b></p>   |          |                         |
| Date of Meeting:  |          | 15th October 2024       |
| Agenda Item:  | <b>7</b> | ESTYN INSPECTION UPDATE |
| <p><u>Background to the Report:</u></p> <p>Estyn inspection guidance for schools inspected from Sept 2024-2030 was published during the summer.</p>   |          |                         |
| <p><u>Purpose of the Report:</u></p> <p>Inform SACRE members of the changes to the inspection framework.</p> <p>Relevant documents for this report:</p> <p>How we inspect</p> <p>Welsh <a href="#">Sut-rydym-yn-arolygu-Ysgolion-a-gynhelir-ac-UCDau_0.pdf (gov.wales)</a></p> <p>English - <a href="#">How We Inspect - 2024 maintained schools and PRUs (gov.wales)</a></p> <p>What we inspect</p> <p>Welsh - <a href="#">Beth rydym yn ei arolygu - Ysgolion a gynhelir ac UCDau (gov.wales)</a></p> <p>English - <a href="#">What We Inspect - 2024 Maintained Schools and PRUs (gov.wales)</a></p> |          |                         |
| <p><u>Recommendations:</u></p> <ul style="list-style-type: none"> <li>▪ To receive the presentation.</li> </ul>   |          |                         |

This page is intentionally left blank

|   |          |                                      |
|---|----------|--------------------------------------|
| <p><b>Denbighshire County Council</b><br/> <b>Standing Advisory Council for Religious Education</b><br/> <b>(SACRE)</b></p>   |          |                                      |
| Date of Meeting:  |          | 15th October 2024                    |
| Agenda Item:  | <b>8</b> | SACRE DRAFT ANNUAL<br>REPORT 2023-24 |
| <p style="text-align: center;"><u><i>Background to the Report:</i></u></p> <p>It is a statutory requirement on the SACRE to produce and Annual Report of its work, and that this Annual Report be made available to DfES by December 31st.</p>  |          |                                      |
| <p style="text-align: center;"><u><i>Purpose of the Report:</i></u></p> <p>To identify and record the work of the SACRE for the year from September 2023 – July 2024</p>  |          |                                      |
| <p style="text-align: center;"><u><i>Recommendations:</i></u></p> <ul style="list-style-type: none"> <li>▪ To approve the report, subject to any amendments, as an accurate account.</li> <li>▪ To request the LA to have the report translated into Welsh, and made available to all schools and colleges in Denbighshire, and other recipients as required by law and as identified in the report.</li> </ul> |          |                                      |

This page is intentionally left blank



# Annual Report

of the  
**Standing Advisory Council**  
&  
**Standing Advisory Council**  
for Religious Education

**2023-24**



The Role of the Standing Advisory Council for Religious Education:

The principal roles of SACRE are:

- Advising the Local Authority on matters to do with Religious Education and collective worship, or Spiritual and Moral Development;
- Consider applications from Headteachers that their school be released from the statutory requirements for Collective Worship to be wholly or mainly of a broadly Christian character (such applications are known as 'Determinations');
- Require a Local Authority to review its Agreed Syllabus;
- Monitor the provision of RE, collective worship and spiritual, moral, social and cultural development in the schools of the Local Authority;
- Give advice on teacher agreed syllabus RE, including the choice of teacher materials;
- Advising the Local Authority on the provision of training for teachers (in RE);
- Considering complaints about the provision and delivery of RE and collective worship made to the Local Authority.
- To publish an Annual Report on its work.

The Composition of SACRE:

The statutory requirements for the setting up of SACREs require three committees of members:

- Representatives of Christian denominations or other religions and their denominations reflecting the principal religious traditions of the locality;
- Teacher representatives;
- County Council representatives.

There is also the right to co-opt members.



## CONTENTS

|  | Page No: |
|--|----------|
| <b>1. Executive Summary.</b>                                       | 4-5      |
| <b>2. Advice given to the LA:</b>                                  | 6-13     |
| a) Religious Education and the Agreed Syllabus                     |          |
| b) Learning and Teaching and provision of Initial Teacher Training |          |
| c) Collective Worship  |          |
| d) Constitution  |          |
| <b>3. Other Matters:</b>   | 13-15    |
| a) Local matters   |          |
| b) National matters:   |          |
| i. Estyn   |          |
| ii. DfES (Education Wales)   |          |
| iii. WASACRE   |          |
| c) Complaints  |          |
| <b>4. Appendices:</b>  | 15-16    |
| a) Composition of SACRE  |          |
| b) Number and dates of meetings                                    |          |
| c) Organisations receiving the report                              |          |
| d) Newsletter  |          |

*Images on the front cover - used on license from Adobe Stock images*

## Executive Summary

| <b>Topics/Issues:</b>     | <b>Advice given:</b>  | <b>Implemented<br/>By LA:</b>  |
|---------------------------|---|--|
| RE: Agreed Syllabus       | <ul style="list-style-type: none"> <li>Denbighshire Local Authority's adopted the <a href="#">Religion, Values and Ethics Guidance</a> as the basis of the Local Agreed Syllabus for RVE in March 2022. The Denbighshire Agreed Syllabus for RE is still applicable for secondary school years 9-11.</li> </ul>   | ✓  |
| RE: Standards             | <ul style="list-style-type: none"> <li>Following consideration of Inspection Reports, schools are sent letters congratulating them for the good features.</li> </ul>  | ✓  |
| RE: Learning and teaching | <ul style="list-style-type: none"> <li>Supporting Guidance has been created to support schools' understanding and planning for RVE within the Curriculum for Wales 2022.</li> <li>The LA should continue to promote and make schools aware of the following:                             <ul style="list-style-type: none"> <li>○ The Agreed Syllabus for RVE</li> <li>○ The Agreed Syllabus for RE</li> <li>○ Supplementary guidance for RVE</li> <li>○ GwE's Unpacking the Humanities AOLE (Secondary)</li> <li>○ Comprehensive Guide for RE</li> <li>○ RE in the Foundation Phase</li> <li>○ RE Quality Mark</li> <li>○ North Wales RE Hwb Network</li> <li>○ The annual newsletter contains reference to useful teaching materials</li> <li>○ Agored Cymru level 2 award in exploring worldviews</li> <li>○ WJEC GCSE Religious Studies - Teaching from 2025</li> <li>○ Diversity and anti-racism professional learning (DARPL)</li> <li>○ National Association for Teachers of Religious Education Anti Racism resources</li> <li>○ RE Today</li> <li>○ Post 16 Challenging Religious Issues (E-Journal)</li> <li>○ European Forum for Teachers of Religious Education</li> <li>○ Welsh Governments Professional Learning Modules for RVE</li> </ul> </li> </ul> | ✓<br><br>✓<br>✓<br>✓<br>✓<br>✓<br>✓<br>✓<br>✓<br>✓<br>✓<br>✓<br>✓<br>✓<br>✓<br>✓ |

|                           |   |                  |
|---------------------------|---|------------------|
| RE: Provision of ITT      | <ul style="list-style-type: none"> <li>Presentations have been received from ITT providers and the Welsh National Centre for RE.</li> </ul>   |                  |
| Collective Worship        | <ul style="list-style-type: none"> <li>WASACRE published guidance on the withdrawal of pupils from Collective Worship – October 2021.</li> </ul>  | ✓                |
| Constitution              | <ul style="list-style-type: none"> <li>An additional member representing a non-religious world view to be added to the group on SACRE representing Faiths and non-religious philosophical convictions in line with the advice provided by the Welsh Government. Humanist representation to be sought for Committee Group A.</li> </ul>  | ✓                |
| Other Matters: Local      | <ul style="list-style-type: none"> <li>A third newsletter has been published – the LA will distribute it to all schools.</li> </ul>   | ✓                |
| Other Matters: National   | <ul style="list-style-type: none"> <li>Members receive regular updates of Estyn Inspection Reports or documents relating to RE and Collective Worship.</li> <li>WG released the Religion, Values and Ethics (RVE) guidance.</li> <li>The SACRE maintain its membership of WASACRE. Representatives attend and report back on the meetings of the association.</li> <li>Members attended the WASACRE conference hosted in Wrexham Glyndwr University.</li> </ul> | ✓<br>✓<br>✓<br>✓ |
| Other Matters: additional | <ul style="list-style-type: none"> <li>No other additional matters.</li> </ul>  |                  |
| Complaints                | <ul style="list-style-type: none"> <li>No complaints received.</li> </ul>   |                  |

## 2. Advice Given to the LA

### a. Religious Education and the Agreed Syllabus

#### i. The Agreed Syllabus

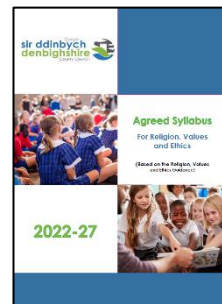
##### **Agreed Syllabus for Religion, Values and Ethics (Curriculum for Wales 2022)**

Denbighshire Local Authority Published its Locally Agreed Syllabus for Religion, Values and Ethics during the summer of 2023. The Agreed Syllabus is based on Welsh Governments' [Religion, Values and Ethics Guidance](#). Changes have been made to ensure that the document can be read as a Denbighshire Agreed Syllabus for RVE and each section is numbered to allow it to be navigated with ease.



During the academic year 2023-24, in accordance with the changes to the Curriculum for Wales 2022, Religion, Values and Ethics was taught to all primary school children and learners in year 7 and 8.

In the academic year 2023-24, secondary schools continued to teach the pre 2022 curriculum (called Curriculum for Wales 2008), including the Agreed Syllabus for Religious Education, to pupils from years 9 to 11.



To download a copy of the Denbighshire Agreed Syllabus for Religion, Values and Ethics please go to...

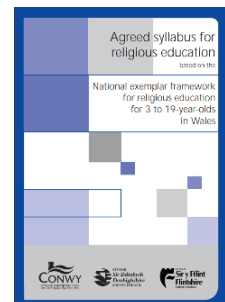
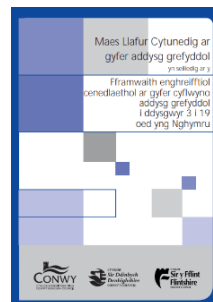
English – [https://1drv.ms/b/s!Ai7Z9WAeWMNXhd8mIfgDThYuSHs\\_Hg?e=mHIWCW](https://1drv.ms/b/s!Ai7Z9WAeWMNXhd8mIfgDThYuSHs_Hg?e=mHIWCW)

Welsh –

<https://1drv.ms/b/s!Ai7Z9WAeWMNXhd9HfvczJ5abJjroPA?e=bugpZd>

##### **Agreed Syllabus for Religious Education (Curriculum for Wales 2008)**

The Agreed Syllabus, conforming to the requirements of the new Curriculum for Wales 2022, relates the subject titled 'Religion, Values and Ethics'. The previous Agreed Syllabus, still applicable for secondary schools for the reasons described above, relates to the subject titled 'Religious Education'. This is an important distinction.



Denbighshire adopted the 'National Exemplar Framework for Religious Education for 3-19 year olds' as the Locally Agreed Syllabus for 'Religious Education' in 2008. To download a copy of the Agreed Syllabus for Religious Education please go to:

English - <https://1drv.ms/b/s!Ai7Z9WAeWMNXhJkRqyAGO2b1HtmpnQ?e=D98kuj>

Welsh - <https://1drv.ms/b/s!Ai7Z9WAeWMNXhJkPk7GnR4j8dGRkWQ?e=WUXJSs>

#### ii. Standards

## Examinations Reports

Due to continued guidance from Welsh Government on the way data is presented and to avoid arbitrary comparison of schools, members were not presented with and were unable to discuss the comparative examination data for examinations awarded in 2022/23.

The principal education manager for Denbighshire has attended all SACRE meetings this year. There has been and will continue to be a much closer relationship between the LA and SACRE. The principal education manager will be able to identify schools requiring additional support as a result of a schools' own self-evaluation, Estyn inspections and collaboration with the regional consortia.

## Inspection Reports

There are no subject judgments in the current Estyn inspection framework. Instead, members receive information from the reports relating to Estyn's comments of a schools' provision of SMSC. See part c Collective Worship - Monitoring provision - Inspection reports.

Estyn conducted a thematic review of Religious Education at key stage 2 and key stage 3. Estyn published its findings June 2018. The report provided recommendations as a result of its findings. Click image to see report:



The current attached report outlines recommendations summarised below.

Estyn provide **Supplementary Guidance** to help inspectors to consider specific aspects of education and training. In 2021, Estyn published guidance on '[Equity, human rights and English as an additional language](#)'. Many of the aspects Inspectors *should consider* when inspecting this area can be supported by effective RE or RVE teaching.

Estyn also publish **Effective Practice** case studies. The following two highlight good practice in RVE or RE.

- [Promoting pupils' multicultural and moral development](#). (May 2024)
- [How the school uses the wider outdoor environment and community \(Cynefin\) to enhance pupils' learning experience](#). (July 2023)

## **b. Learning and Teaching**

### Curriculum for Wales 2022

For information about the Curriculum for Wales 2022 please watch this 35 minute [training session](#) organised by Denbighshire Local Authority.

## **Religion, Values and Ethics – Supporting Guidance**

Supporting Guidance has been created to support the understanding and planning of RVE within context of the curriculum for Wales 2022. The guidance contains information about:

- RVE concepts
- Concepts cross-referenced with the Humanities AOLE Statements of What Matters and Descriptions of Learning
- RVE Lenses
- RVE Journeys
- Points to consider for schools and settings.

Download a copy using the links below:

English - <https://1drv.ms/b/s!Ai7Z9WAeWMNXhd9Fsz8MOigIHzmFSw?e=Ft4QkH>

Welsh - <https://1drv.ms/b/s!Ai7Z9WAeWMNXhd9Yj5eNwB9YBEA2XA?e=KaQ8Cr>



## **GwE – Unpacking the Humanities AOLE (Secondary)**

During the summer term 2022, GwE provided two training sessions for secondary school humanities teachers providing key messages regarding this AOLE.

The first session focus:

- An understanding of the mandatory elements of the Curriculum for Wales framework in relation to the Humanities
- The principles of planning and key considerations for the Humanities
- The pedagogical considerations within the 'Designing your curriculum' section outlined in the AoLE guidance

Presentation English - <http://cefnogaeth.gwegogledd.cymru/wp-content/uploads/2022/06/Humanities-Session-1.pdf>

Presentation Welsh - <http://cefnogaeth.gwegogledd.cymru/wp-content/uploads/2022/06/Dyniaethau-1.pdf>

Video English - <https://www.youtube.com/watch?v=b3LpzxDCERw>

Video Welsh - <https://www.youtube.com/watch?v=b3LpzxDCERw&t=7s>

The second session focus:

- Developing a shared understanding of the learning continuum
- Considering approaches to planning and assessment
- Exploring effective pedagogical approaches within and beyond the AoLE

Presentation English - <http://cefnogaeth.gwegogledd.cymru/wp-content/uploads/2022/07/Session-2-Humanities-eng.pdf>

Presentation Welsh <http://cefnogaeth.gwegogledd.cymru/wp-content/uploads/2022/07/Sesiwn-2-Dyniaethau -CYFRWNG-CYMRAEG.pdf>

Video English - <https://www.youtube.com/watch?v=ZuE-HbpwB1Y&t=3s>

Video Welsh - <https://www.youtube.com/watch?v=Z1gemVVRzZQ>

## **Religious Education**

SACRE and the LA have previously provided comprehensive documents and materials in support of the Agreed Syllabus for Religious Education, and these contain advice on methods of teaching and delivery of RE.

The planning documents, 'Comprehensive Guide to RE' and 'RE in the Foundation Phase', which complement the Agreed Syllabus for Religious Education, continue to

be accessed and used by schools. These resources may be adapted for the delivery of RVE in the primary sector and will continue to be relevant to year groups being taught Religious Education. The resources are available on a Hwb Network - North Wales Religious Education Network. To download a copy of these resources please see below:

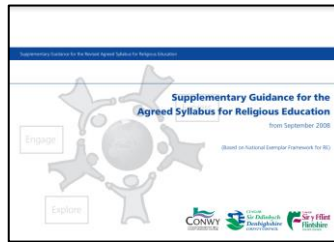
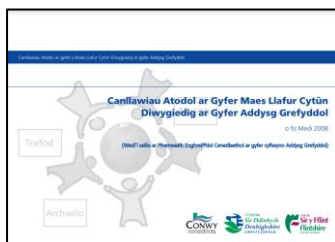
### **Comprehensive Guide to RE**

English -

[https://drive.google.com/file/d/1G9jCYby8XQJgg9m8JN6HYA3sr\\_iR5E18/view?usp=sharing](https://drive.google.com/file/d/1G9jCYby8XQJgg9m8JN6HYA3sr_iR5E18/view?usp=sharing)

Welsh - [https://drive.google.com/file/d/1OsNQ-](https://drive.google.com/file/d/1OsNQ-UtnokWTIWzxBuJQfz7tVLohhml/view?usp=sharing)

[UtnokWTIWzxBuJQfz7tVLohhml/view?usp=sharing](https://drive.google.com/file/d/1OsNQ-UtnokWTIWzxBuJQfz7tVLohhml/view?usp=sharing)

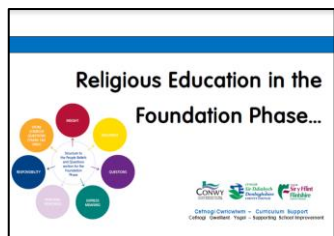


### **RE in the Foundation Phase**

English - <https://drive.google.com/file/d/1X-9J8auJglQ-GzGk12o-002s81gdQ8tV/view?usp=sharing>

Welsh -

[https://drive.google.com/file/d/17itLQaqOsQ6WjLdk\\_ee1AlaigdqwKW0w/view?usp=sharing](https://drive.google.com/file/d/17itLQaqOsQ6WjLdk_ee1AlaigdqwKW0w/view?usp=sharing)



### **Religious Education Quality Mark**



Self-evaluation materials continue to be promoted and are available on the REQM website. The RE Quality Mark recognises, celebrates and publicises outstanding religious education in all primary and secondary schools in England, Wales and Northern Ireland through its three levels of award,

bronze, silver and gold. More information about the quality mark can be found on

<https://www.reqm.org/>

*Self Evaluation Materials:*

[RE-Quality-Mark-Criteria-2024.docx](#)

[Meini-Prawf-MAAG-2024.docx](#)

### **North Wales RE Hwb Network**

Teaching and research materials are available for teachers accessible through Hwb's - North Wales RE network - <https://hwb.gov.wales/go/d8tfh3>. Only those with a Hwb account will be able to access the materials on this network. The network contains teaching resources and research material relevant to Religious Education.



Key research material available is:

- [Big Ideas for Religious Education – Edited by Barbara Wintersgill](#) (English only)
- [Signposts – Policy and practice for teaching about religions and non-religious world views](#) (English only)
- [A pedagogy of embrace : a theology of hospitality as a pedagogical framework for religious education in Church schools](#) (English only)
- [How well does a cross curricular Humanities Scheme of Work reflect the four purposes of the new Wales Curriculum 2022?](#)

### **RE:Online**



[RE:Online](#) is a website developed by Culham St Gabriel's to equip and resource teachers and educational professionals to support high Quality religion and worldviews education.

### **AGORED CYMRU LEVEL 2 AWARD IN EXPLORING WORLDVIEWS**

'Exploring Worldviews' is a suite of level 1 and 2 qualifications supporting an understanding of religious and non-religious worldviews. The qualification meets the three core skills set out in the exemplar framework (current curriculum), and it provides opportunities for exploring the concepts for RVE through the statements of what matters in the Humanities area of learning and experience in the Curriculum for Wales (new curriculum). It is not designed to replace the current Religious Studies GCSE, however, it will provide an accessible recognised qualification whilst allowing a school to meet its statutory obligation at Key Stage 4. More details can be found by visiting



English - <https://www.agored.cymru/Units-and-Qualifications/Learning-Core/Exploring-Worldviews>

Welsh - <https://www.agored.cymru/Unedau-a-Chymwysterau/Craidd-Dysgu/Archwilio-Bydolygon>



## **WJEC GCSE Religious Studies - Teaching from 2025**



Specification for the GCSEs and 'A' level courses can be accessed here.

- [GCSE](#)
- [A Level](#)

The following [Link](#) includes dates for the publication of the specification, assessment materials and guidance for teaching.

## **Diversity and anti-racism professional learning (DARPL)**

DARPL's website contains a range of training material to support this important aspect of the Curriculum for Wales 2022.

English - <https://darpl.org/>

Welsh - <https://darpl.cymru/>



## **National Association for Teachers of Religious Education**



Schools have been informed of anti-racist resources made available by NATRE. Unfortunately, these resources are only available in the English language. They can be accessed here...

<https://www.natre.org.uk/about-natre/projects/anti-racist-re/>

## **RE Today Services**

[RE today](#) provides resources to support teachers as they engage with the Curriculum for Wales.



## **Post 16 Challenging Religious Issues (E-Journal)**

Challenging Religious Issues is a journal for students and teachers of AS and A-level Religious Studies. It is also a useful

resource for anyone who wants to develop or refresh their subject knowledge. Over 65 open access journal articles have been published in the journal so far including articles written by leading scholars and practitioners. The articles are linked to

Religious Studies A-level specifications. The articles are interactive through the use of 'discussion points' and live links to relevant external websites. All issues are available in English and Welsh. The St Giles' Centre has funded and managed the Welsh language version from issue 14 onwards. Please click the link below to access the Challenging Religious Issues from the St Giles website.

English - <https://stgilescentre.org/16-2/>

Welsh - <https://stgilescentre.org/cy/16-2/>



## **European Forum for Teachers of Religious Education**

Teaching of RE differs greatly across Europe. For a greater insight into RE in neighbouring countries visit [www.eftre.net](http://www.eftre.net)



## Religion, values and ethics (RVE): what's new?

These resources are intended to support practitioners with the changes to RVE (formerly Religious Education), within the Curriculum for Wales. The modules are specifically tailored and aim to support practitioners. They help with the transition to a new way of thinking, planning and delivering an RVE curriculum that is purposeful for learners in Wales. There are currently five modules:

English - [Repository - Hwb \(gov.wales\)](#)

Cymraeg - [Repository - Hwb \(gov.wales\)](#)



## CREFYDD, GWERTHOEDD A MOESeg: BETH SY'N NEWYDD?

Bwriad yr adnoddau hyn yw cefnogi ymarferwyr gyda'r newidiadau i Grefydd, Gwerthoedd a Moeseg (Addysg Grefyddol gynt), o fewn y Cwricwlwm i Gymru. Mae'r modiwlau wedi'u teilwra'n benodol ac yn anelu at gefnogi ymarferwyr. Maent yn helpu gyda'r newid i ffordd newydd o feddwl, cynllunio a chyflwyno cwricwlwm Crefydd, Gwerthoedd a Moeseg sy'n bwrpasol i ddysgwyr yng Nghymru.

Saesneg - [Repository - Hwb \(gov.wales\)](#)

Cymraeg - [Repository - Hwb \(gov.wales\)](#)

## ITT provision



SACRE members received presentations from The Welsh National Centre for RE based at Bangor University. Teachers across the LA can access professional support from centre staff. The centre provides A level and GCSE revision materials and classes and Professional Learning for secondary teachers a range of religions and worldviews.

2 Welsh National Centre for RE Staff teach on the 1 year PCSE secondary course. Primary PGSE and BE'd students receive lectures on RVE as part of their CaBan. CaBan is a partnership between schools, Bangor University, the Regional Consortium (GwE) and the research institute CIEREI.

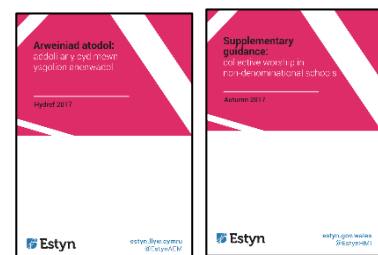


## c) Collective Worship

### Monitoring provision

### Inspection Reports

The Estyn supplementary guidance on inspecting collective worship was updated in November 2017 and continues to state that Estyn requires inspection teams to consider the provision for pupils' spiritual development and daily acts of Collective Worship in all non-denominational schools. Inspection teams must consider these aspects on each inspection and each report is likely to contain some comment of these aspects of pupils' development. However, it is



not expected that inspectors will report on the quality of Collective Worship. It is up to each inspection team to weigh up the significance of any strengths and weaknesses in each inspection area.

There is no expectation for inspectors to report on whether a school meets the statutory duty to provide a daily act of collective worship, there would be an expectation of a comment in the report if a school were to be found in breach of its statutory duty.

As part of the process of monitoring, Estyn Inspection Reports are analysed for comments on collective worship and spiritual, moral, social and cultural development (SMSC). These are compiled and noted by SACRE. Letters are sent to schools following the consideration of them in SACRE, commending good practice. Estyn restarted inspections during the summer 2022. 10 Inspection reports were analysed and presented to SACRE members during the Summer Term meeting.

| Positive Comments in Inspection Areas: | No of schools |
|--|---------------|
| Wellbeing and attitudes to learning    | 5             |
| Teaching and Learning Experiences      | 7             |
| Care, Support and Guidance             | 10            |

### **INSET for Collective Worship**

WASACRE published guidance on the withdrawal of pupils from Collective Worship – October 2021.

English - <https://drive.google.com/file/d/1ul4IrhIHGeDrKC2EYU3LpypJdsussTX0/view>

Welsh - <https://drive.google.com/file/d/149OtijKIL4F3qYbLXUVYzv4cRGhyk4IL/view>

Other useful guidance on Collective Worship:

English - [GUIDANCE ON COLLECTIVE WORSHIP JUNE 2012](#)

Welsh - [\(C\) GUIDANCE ON COLLECTIVE WORSHIP](#)

### **Determinations**

No Determinations have been made.

### **d) Constitution**

No changes have been made to the constitution.

### 3) Other Matters

#### a) Local

SACRE members met three times during the academic year. All three meets were held virtually.

#### Newsletter

Conwy and Denbighshire published its third newsletter. It provides schools with news related to RE/RVE and is especially important during the preparation for the new curriculum. The third edition contains information about the Curriculum for Wales. It also contains useful information about the WASACRE summer conference held at Wrexham's Glyndwr University.



#### RVE Network

Denbighshire County Council created a Microsoft TEAMS during the summer 2022. The network 'DCC Religion, values & ethics 2022' allows teachers to access the Agreed Syllabus, the Supporting Guidance and other useful material. To access the network please use the following link:



<https://teams.microsoft.com/l/team/19%3aSJHouQczzZxDrh7YWAFqk1FKtFzQ-A5hN8e8y856Zfg1%40thread.tacv2/conversations?groupId=aac98823-0b35-48fab2a-5e711bb714c6&tenantId=4f3f0e52-b734-4164-9409-1b601d147993>

#### b) National

##### i. Estyn:

#### Estyn Inspection Framework 2024 onwards:

Estyn inspection guidance for schools inspected from Sept 2024-2030 was published during the summer. Documents explaining what and how Estyn inspect can be accessed on the Estyn Website

How we inspect

English - [How We Inspect - 2024 maintained schools and PRUs \(gov.wales\)](#)

Welsh - [Sut-rydym-yn-arolygu-Ysgolion-a-gynhelir-ac-UCDau\\_0.pdf \(gov.wales\)](#)

What we inspect

English - [What We Inspect - 2024 Maintained Schools and PRUs \(gov.wales\)](#)

Welsh - [Beth rydym yn ei arolygu - Ysgolion a gynhelir ac UCDau \(gov.wales\)](#)



## ii. Welsh Government - Education and Skills:

### Supporting framework for RE

SACRE members were informed of Professional Learning resources supporting the roll out of the new curriculum, created by a Welsh Government and WASACRE collaboration. These resources were published Summer 2023:

Welsh Medium Playlist -

<https://hwb.gov.wales/repository/resource/eef7e399-93bb-4d7c-ab68-145c93f4c6d3>

English Medium Playlist - <https://hwb.gov.wales/repository/resource/eef7e399-93bb-4d7c-ab68-145c93f4c6d3>



## iii. WASACRE

Members of SACRE and the LA were represented at three meetings of WASACRE and received some of the presentations that had been made. SACRE continued to receive reports from representatives attending the meetings of the Association. Minutes and papers from WASACRE have also been presented at SACRE meetings. Minutes and presentations can be found on WASACRE's website <http://wasacre.org.uk/>.



The WASACRE conference 2024 included an in-person conference day held on 13th June and a series of online seminars. The conference day, held at Wrexham University, provided delegates with keynote talks from Graham Donaldson, Lynne Neagle MS (Cabinet Secretary for Education and the Bishop of Llandaff, Rt Revd Mary Stallard. Attendees were able to choose from a selection of workshops from teachers and RVE professionals celebrating good practice in the Curriculum for Wales. Contact [lordp2@hwbcymru.net](mailto:lordp2@hwbcymru.net) for details about accessing the videos and seminar materials

## c) Complaints

No complaints were received by the SACRE.

## 4. Appendices:

### a) Composition of SACRE

#### Representing Religious Denominations and Non-Religious Philosophical Convictions:

Church in Wales  
Jennie Downes

Roman Catholic  
Collette Owen

Baptist Union  
Nomination awaited (Welsh)  
Nomination awaited (English)

Presbyterian  
Rev. Brian H Jones (Welsh)  
Nomination awaited (English)

Methodist  
Rev. Martin Evans-Jones

United Reformed  
Nomination awaited

Union of Welsh Independents  
Nomination awaited

Religious Society of Friends  
Dominic Oakes

Humanist  
Suzy Sturley

#### Representing Teacher Associations:

Secondary Headteacher  
Leah Crimes

Junior Headteacher  
Nomination awaited

Secondary RE Specialists  
Sarah Griffiths

Infant Headteacher  
Nomination awaited

Special School Teachers  
Nomination awaited

Junior Classroom Teacher  
Susan Williams

Infant Classroom Teacher  
Nomination awaited

#### Representing Denbighshire County Council

Councillor Ellie Chard  
Councillor Cheryl Williams  
Councillor Ann Davies  
Councillor Gill German

Councillor Merfyn Parry  
Councillor Huw Williams  
Councillor Delyth Jones  
Councillor Emrys Wynne

#### Co-opted Members:

Tania Ap Sion – Director of the St. Mary's Centre

## **b) Number and dates of meetings**

### SACRE Meetings:

- 9<sup>th</sup> October 2023
- 15<sup>th</sup> February 2024
- 19<sup>th</sup> June 2024

## **c) Organisations receiving the report**

- DFES
- Denbighshire Schools
- The report is available on the WASACRE website for interested organisations.

This page is intentionally left blank



|  |          |                               |
|--|----------|-------------------------------|
| <p><b>Denbighshire County Council</b><br/> <b>Standing Advisory Council for Religious Education</b><br/> <b>(SACRE)</b></p>  |          |                               |
| Date of Meeting:   |          | 15 <sup>th</sup> October 2024 |
| Agenda Item:   | <b>9</b> | WASACRE                       |
| <p><u>Background to the Report:</u></p> <p>SACRE continues to be a member of the Wales Association of SACREs, and receives reports on meetings from members attending, copies of minutes of meetings and any other reports from the Association.</p>                 |          |                               |
| <p><u>Purpose of the Report:</u></p> <p>For members to be informed as to the focus and main outcomes of the previous meeting.</p>  |          |                               |
| <p><u>Recommendations:</u></p> <ul style="list-style-type: none"> <li>▪ To receive a verbal update on the WASACRE conference held on 13<sup>th</sup> June 2024.</li> <li>▪ To agree attendance to the next WASACRE meeting 14<sup>th</sup> November 2024.</li> </ul> |          |                               |

This page is intentionally left blank